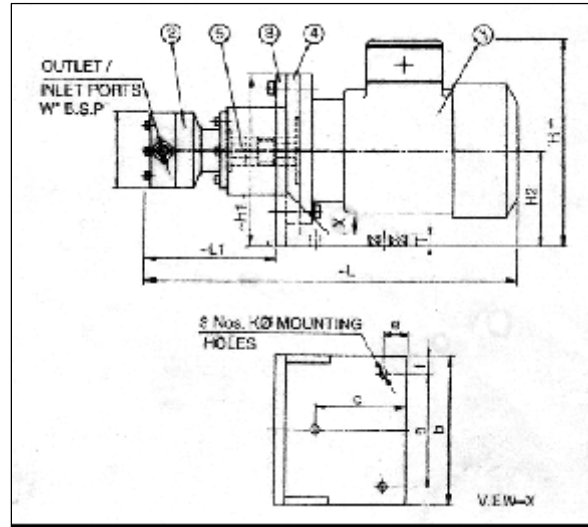




## Rotary Gear Oil Pump



Item No.	Description	Qty.
1	Motor	1
2	Pump	1
3	L- Bracket	1
4	Adopter	1
5	Coupling Assembly	1

### TECHNICAL SPECIFICATIONS

Model of Pump	Discharge At 1500RPM	Electric Motor /Flange Mounted TEFC, 3Phase, 4Pole, (1500RPM Syn), Class-B Insulation
PP-0.5	0.5LPM	0.16HP 415V, 50Hz
PP-1	1 LPM	0.25 HP 415V, 50Hz
PP-3	3 LPM	0.25 HP 415V, 50Hz
PP-6	6 LPM	0.25 HP 415V, 50Hz
PP-10	10 LPM	0.5 HP 415V, 50Hz
PP-16	16 LPM	0.75 HP 415V, 50Hz
PP-25	25 LPM	1.0 HP 415V, 50Hz
PP-40	40 LPM	1.5 HP 415V, 50Hz

DIMENSION ARE IN m.m.													
L	L1	D0	H	H1	H2	T	W <sup>n</sup>	a	b	c	e	f	K0
270	71	45	185	160	90	8	1/8	100	140	80	20	20	9
325	110	60	185	160	90	8	¼	100	140	80	20	20	9
330	115	60	185	160	90	8	¼	100	140	80	20	20	9
360	145	80	185	160	90	8	3/8	100	140	80	20	20	9
400	160	80	255	185	105	12	3/8	110	160	90	20	25	9
450	190	115	255	225	125	12	½	140	200	110	25	30	11
525	215	115	260	225	125	12	½	140	200	110	25	30	11
550	230	115	260	225	125	12	3/4	140	200	110	25	30	11



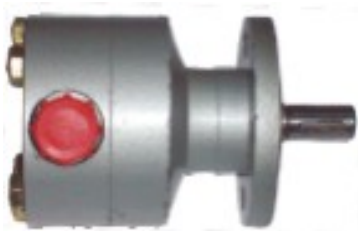
## Rotary Gear Oil Pump



Motor Pump assembly generally comprises of a 3 Phase Motor TEFC class 'B' which is coupled with the rotary mini pump. A L-bracket is tightened in between the pump, adaptor and bell housing of motor by means of four screws for the mounting of the whole motor pump assembly. Motor is generally fan cooled. Motor is coupled with the pump by a star coupling ensuring no twisting, slackness & slippage of two rotating shafts of pump and motor respectively. Direction of motor is indicated on the unit. Adaptor side of the pump and the face of bell housing of the motor is properly finished and comprises of two threaded holes so that both the items are properly screwed from outside. Three Nos. of holes are provided in the base plate of L-bracket for mounting. An electrical terminal box is provided on the side surface of the motor for electric main supply.

Accessories like Suction Strainer, Relief Valve, Flow Control, Inline Filter can be supplied on demand.

Bell housing of the Assy is provided with a threaded hole which can be connected by a tubing to put back the extra oil of internal leakages into tank.



38, Bibijan Street, 1<sup>st</sup> Floor, Office No.20, (Off Nagdevi Street) Mum-3.  
Tel No- **23447152, 23439556** Fax- **23420498** Email: **vijayeng1@hotmail.com**  
[www.vijaylube.com](http://www.vijaylube.com)